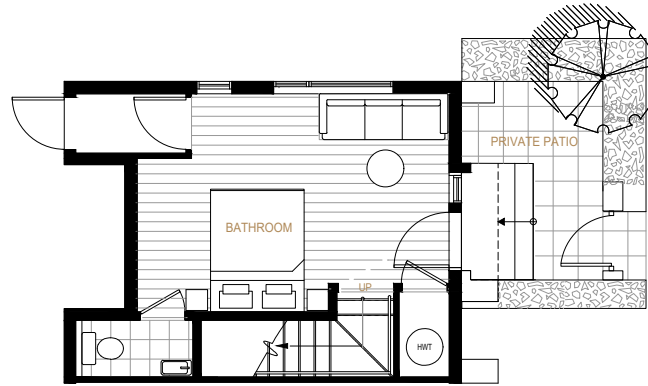


# M

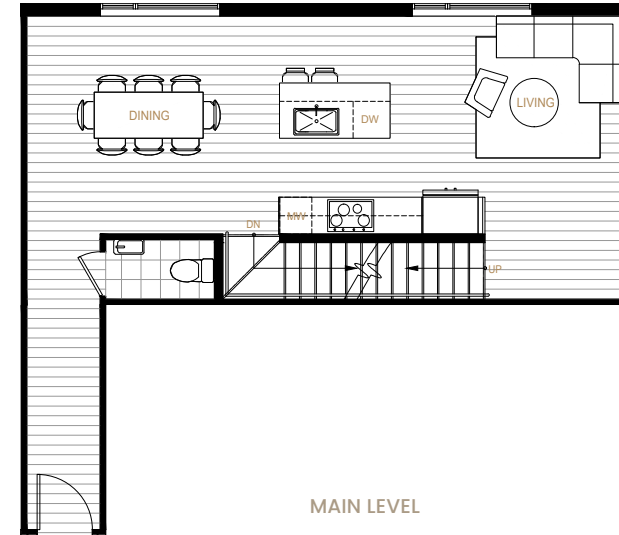
## 4 BED, 3.5 BATH

Interior 1,935 sf | Exterior 453 sf | Total 2,388 sf

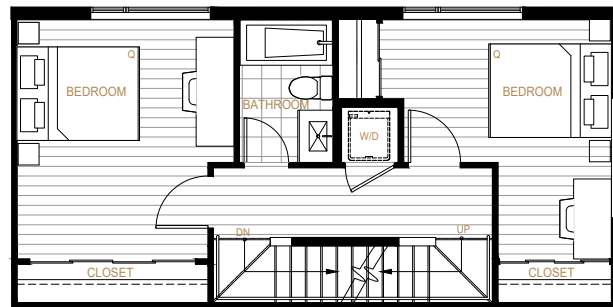
8899  
Spire



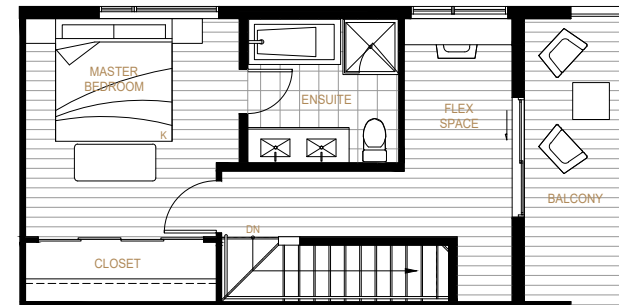
GROUND LEVEL



MAIN LEVEL

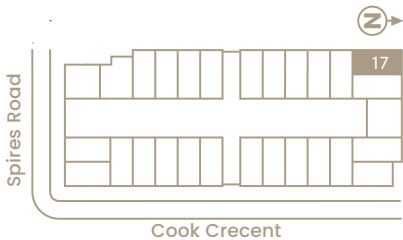


SECOND LEVEL



UPPER LEVEL

8



Spires Road

Cook Crescent

\* Floor plan layout may appear as a mirror image from what is illustrated. Refer to architectural drawings

\* The area and shape of exterior yard and the position of the windows may vary by individual unit.

This is not an offering for sale. Any such offerings may only be made with a Disclosure Statement. Illustrations are for marketing purposes only and the developer reserves the right to change or modify any information without prior notice. Please consult a Sales Representative for more information. E&OE.

TOPStream